

---

\* \* \*

Here begins the entry in Frater OTz PTN--690/PVN's Magickal Record for SATURDAY, the 31<sup>st</sup> Day of DECEMBER, 1983 a.v., (JULIAN DAY N<sup>o</sup> 2,445,700.18) Moon being 26.78 Days old. [4:37pm]

Do what thou wilt shall be the whole of the Law.

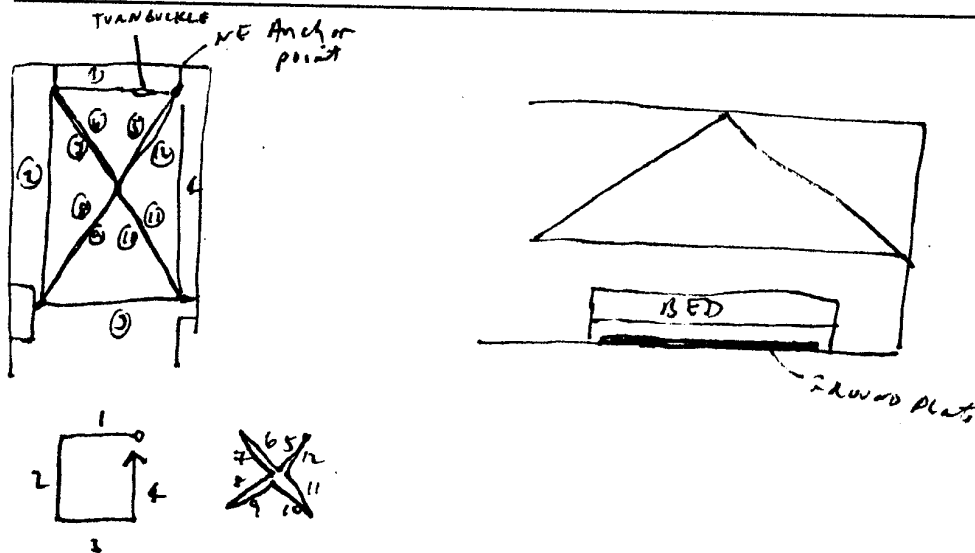
Wonderful dreams & conscious workings from dawn to aprox. 9AM today! I woke up from a dream dripping with sweat. I was hot! Since my bedroom is colder than 55<sup>o</sup>F, such heat is not normal. Likewise, my crystal was very

hot to the touch (almost too hot to touch!). After throwing off my blankets, I lay there collecting my thoughts to recollect my dreams. Nothing very intriguing developed directly, so I concentrated on the message(s) behind the dreams rather than the plot/characters in the dream itself. I felt all sorts of very strong energy which I can only describe as 'pyramid energy' which felt focused thru the Double Vortex which O-Maku & I opened up about 4 years ago, but which I haven't really done much with in at least 3 years. I followed the energy & looked for 'messages'.

I was shown (by whom, I know not) an allegory which pointed out that the Egyptians probably understood only a part of the whys & wherefores of the pyramids which they built. The pyramids certainly were monuments to both dead Pharaohs & to certain engineering 'constants' of the Universe (as viewed from a very local perspective), but were also prototypes for certain 'magickal engines' whose full function may or may not have been known to the original earthly architects. I saw the pyramids as a highly-tuned aspect of one end of a more-generalized Vortex (see my material on the Double-Vortex). I was shown a 'plan' for creating a modified pyramid (as magickal engine rather than monument) which would be useful for the next phase of my work, dealing with crystals & talismans to focus/direct/amplify my own VIII<sup>o</sup>, IX<sup>o</sup>, & XI<sup>o</sup> 'orgone energy' in the Multi-verse as an impliment of my Will as pertains to the Great Work. I will explain structure & function as I go along & sort out details later with editing or supplemental entries.

Prototype pyramid to be erected in my bedroom. Later, after testing (& when finances are in better shape), a larger scale tune-able pyramid to be built in back field (&/or surrounding whole house). Bedroom pyramid can be made (for the most part) out of existing materials & will be a tension structure -- i.e., the pyramid will be a stretched framework given support by the walls & ceiling of my room.

Framework to be composed of bare (un-insulated) copper wire, threaded through eye-bolts at 5 corners. Eyebolts to be anchored securely in walls & ceiling, with appropriate turnbuckles to allow the wire framework of the pyramid to be nice & tight. Wire of pyramid to be insulated from ground. This is simple because eyebolts will be anchored to woor framing of house. Wire frame to be a electrically continuous, but may be made of several shorter lengths for convenience of installation. Wire to be anchored in NE corner (Boleskine/Hadit point), then threaded around base widdershins, looped through peak from NE to NW corner, from NW to SW corner, from SW to SE corner, & finally, from SE to NE corner. Thus, the base of pyramid is a single strand, while each sloping edge is a double strand. All wire is threaded widdershins in two loops around pyramid anchored first & last to NE corner. Length of wire needed for proposed pyramid is aproximately 876", which is a little over 45 feet.



Around the base of the pyramid is also wrapped an insulated wire connected to NYSEG's 220 volt electrical power. 220 volts are necessary so the full waveform of the 60 cycle international power-grid becomes accessible to me within the pyramid (110 volt uses only one 'hot' wire in relationship to local 'ground', so only half-wave is accessible). One or more magickal devices are to be kept in operation from this power continuously so that electricity is always flowing through this wire. For now, probably a small step-down transformer & a small 'vigil lamp' will be used, but later, I want a nice big Jacob's ladder manifesting outside the pyramid, both for esthetics & for sheer brute force of charging ionizing the air.

Non-conductive Induction between the non-grounded pyramid wires & the 220 volt 60 cycle power net allows communication between the world-wide powernet of the here-&-now of Makuth with the trans-dimensional & trans-temporal pyramid energy. My present understanding of the energy of pyramids & vortices is that their energy is a standing wave, sort of like a DC carrier wave upon which information is impressed. Flow is usually in a single direction for a given vortex (energy travels in one direction, while information travels in the opposite direction). Pyramid energy is a standing field while the 220 volt is 60 cycle AC. Communication occurs via induction between the two independent circuits which are kept insulated from each other. Hence my pyramid acts (on one level) as a power transformer.

Hanging from upper apex of pyramid will be a quartz crystal, connected to apex via conductive wire or chain. Below mattress will be a grounded metal plate. Insulative properties of air & mattress cause pyramid to act (on another level) as a Leyden jar or condensor for the storage of raw power.

Sexual activity between emitter (crystal) & ground will influence conductivity of air, causing the pyramid to act (on yet another level) as

an amplifier. The raw power is the modulated pyramid/power-net energy while the 'message' being imposed & amplified by the circuit is the magickal intention of the sexual priestcraft who use the pyramid. In a very real sense I am seeking to build a device to modulate orgone energy via the intentions of the priestcraft who utilize the pyramid (not only in the here-&-now, but other pyramids as well, & then amplify the orgone energy & broadcast it, both to the 60-cycle power-net & thru the pyramid network to 'else-where/when' throughout alternity.

From looking at various pyramid literature which I have, it would seem that nobody quite knows the exact size of the original pyramids (or perhaps they were all slightly different). Time & erosion & vandalism have all taken their toll, so that each researcher has modified the ambiguities to suit his own purpose. I spent several hours working with the numbers from various books, playing with various combinations within the ranges given to me to find a set of numbers which fit into what I am working to accomplish. Rather than give page after page of intermediate interpolations & false trails, I shall only give the final numbers with a bit of information on each.

First the figures for the 'Giza-size' pyramid.

Verticle Height is 481 feet =  $13 \times 37$ , a high aspect of Unity. 481 is also for Frater Kephera-ma-Ast, who has a very strong 'tie' to pyramids.

Base angle is precisely  $52^{\circ}22'28''$ . 52 is Elihu, Tetragrammaton in Assiah (Material World).  $52=4 \times 13$ , Unity in the 4 elements. IHVAL is the Angel of Kether of Briah & Yesod of Briah. 52 is Father & Mother, the Supernal Mother (fertilized by Yod), Assiah's Secret nature, KLB, a Dog (is God to live in a dog?) & LAVIH, the angel of the 4 of Cups (Luxury) & the 10 of Pentacles (Wealth).

22 is for the Trumps of Tarot, whose prototype exists as a series of paintings in the Temple of the Spynx beneath the Astral form of the Great pyramid. 22 is also puberty, & a magical vision (ChZVA).

28 is the second perfect number (the series of perfect numbers is 6, 28, 496, 8128, etc.). 28 relates to Power, Unity & Clay (as in a rough draft or work in progress).

In decimal form  $52^{\circ}22'28'' = 52.3744444...$

37 is the Unity itself in its balanced Trinitarian manifestation; the Summation of the Sephiroth of the Middle Pillar ( $1+11+6+9+10$ ), Flame, devotion of Force, HBL (The Supernal Breathers). 44 is Blood, Flame, Aquarius, a Ram. 444 is MQRSh, the Sanctuary (of the Temple).

Tangent of the base angle is 1.29732905

129 is Pleasure, Delight. 73 is the Feminine aspect of Chokmah in his phallic function. Gimel, The Wise one, A day of feast. 29 the Magickal Current (masculine Force), the Summation of the letters governing the Paths which connect the Supernals to the Order of the Rosy Cross (V, H, G, Z, Ch). 5 is Mist, vapour, Delicacy (EG) & the Throne of Nu-Isis as Queen of the Menstrual flow.

The above height & base angle yields a base length of 741'06.2822064" (i.e., between 741 & 742 ft.)

741 is the summation of all numbers from 1 to 38.  $38=2 \times 19$ . 19 is the feminine glyph. 38 pertains to filling a hole (Chokmah [2] in phallic aspect filling the feminine glyph of 19). 741 is Amen, & AMThSh, the 4 letters of the elements.

742 is the Ark of Tremblings, i.e., the vibrations of the energy as transmitted by the crystal.

06 is the first perfect number, the Letter H spelt in full (meaning window), the mystic number of Binah (Sum of 1-3).

28 is the second perfect number (see above).

220 is the number of verses in Liber AL vel Legis, the Elect, Pride (IHRH), & Giants.

64 is Golden Waters, Nogah (Sphere of Venus), Prophecy, Justice, & Sigh/moan/deep breath (as in lovemaking).

Based on the limitations of the size of my bedroom, I cannot build such a huge pyramid. I scaled the base length down to 83" since the rituals I intend for the pyramid really tie-into the energies of 83-- Magick + Religion in a sexual atmosphere.

Base angle remains same as for large pyramid.

Height is 53.833". 53 is the Yoni as an instrument of pleasure, A lover, Sun, fever, Fury, & HZIAL, the angel of the 9 of Pentacles (Gain). 833 is the Choir of angels in Kether.

Pyramid will be suspended from a turnbuckle in the ceiling, with the base about 13" above the surface of my bed. Thus, when 2 people are generating the 'grid current', the point of focus will be approximately 11" below the bottom edge of the pyramid & 13" above the ground plate on

the floor. Ground plate ties directly to water ground (just like pyramid ground was Nile river).

I see the pyramid as a nodal point in a vast communications network. A two-way 'step-up transformer' at the point where the consciousness of the race in the here-&-now merges with the collective unconsciousness beyond Time, Space, & the Causal Universe. At that nodal point or nexus (nerve plexus) I work my magick to transmute, transmit, & transform messages going in both directions. This pyramid seems to be the physical plane manifestation of the working which I wrote-up on 26 December (see entry beginning on page 244). By building this 'device' I can have a real influence on the myth structure of the race, both now & at 'other' times, both 'past' & 'future'.

After 'designing' the pyramid mathematically, I worked out the engineering details of the task. Once I became totally convinced of the feasibility of the project, I went into a bit of post-parturition depression. I am very happy with my mathematical & engineering abilities. However, now I have to build this pyramid! & I am not always happy with the fruits of my labor on Malkuth. Also, I am not very patient. I want the pyramid now! In order for me to build this device, I will have to take on more tasks (or put-aside those which I am already doing). Ugh! Working in serial time can be such a chore.

But then I went back to sleep. Lots of real neat pyramid visions & energies coursed through me. On some level the pyramid is already built! -- just by my designing it. It will (of course) be stronger for me (& accessible to others) once I actually build it out of physical plane materials, but even when created out of the tenuous 'stuff' of luminiferous ether, it holds together & functions as I have envisioned.

Anne has been giving herself a real hard time lately. I help where & when I can, but she has determined that she needs that which I am unable to give & has also determined that what I have to offer is not what she needs. Sometimes I feel real drained & unable to work, but once I get some sleep (even just a few hours is enough sometimes), I am once again filled with inspiration for my work. We (one or both of us) has requested that the Universe put us on short rations till we both get our shit together, so the bills remain unpaid. Some orders for books continue to come in, but right now it is not nearly enough.

Both Cliff & Sam called yesterday. I really like both of them. Good solid magickains & real nice folks too. Cliff will be up sometime in February. Sam will be apssing through briefly in February when he